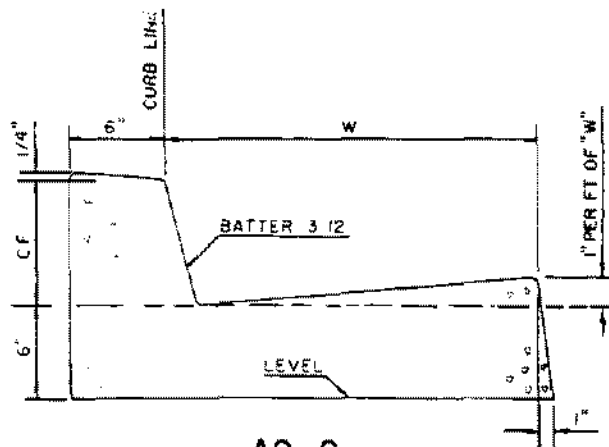
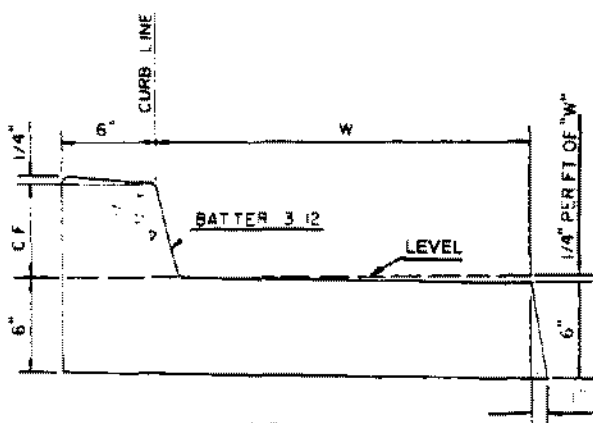


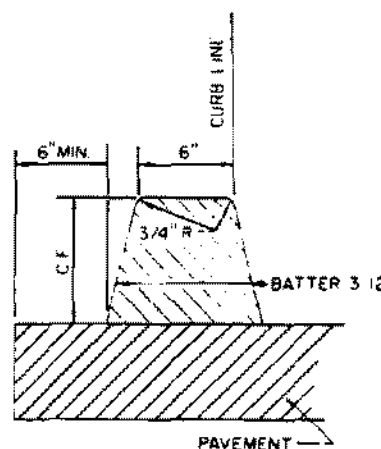
**A1-6
AND
A1-8**



**A2-6
AND
A2-8**



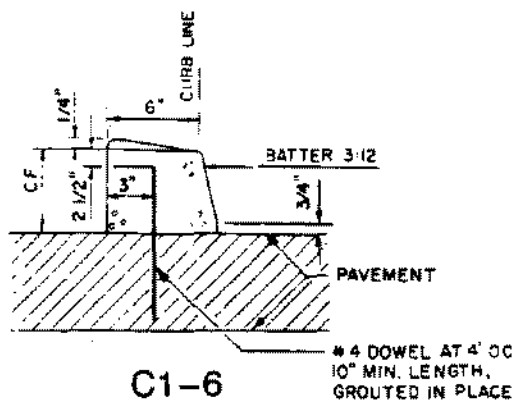
**A3-6
AND
A3-8**



**D1-6
AND
D1-8**

NOTES:

1. ALL DIMENSIONS ARE MEASURED IN INCHES.
2. "CF" IS THE LAST NUMBER IN THE DESIGNATION.
3. "W" IS 24" UNLESS OTHERWISE SPECIFIED.
4. TYPES A1, A2, A3 AND C1 ARE CONSTRUCTED OF PORTLAND CEMENT CONCRETE.
5. TYPE D1 IS CONSTRUCTED OF ASPHALT CONCRETE.
6. TYPE C1 CURB SHALL BE ANCHORED WITH DOWELS AS SHOWN ON WITH AN EPOXY APPROVED BY THE ENGINEER.
7. GRADE SHALL BE MEASURED AT CURB LINE AT TOP OF CURB.
8. ALL EXPOSED CORNERS ON PCC CURBS AND GUTTERS TO BE ROUNDED WITH A 1/2" RADIUS.



**C1-6
AND
C1-8**

* 4 DOWEL AT 4' OC
10" MIN. LENGTH,
GROUTED IN PLACE

AMERICAN PUBLIC WORKS ASSOCIATION – SOUTHERN CALIFORNIA CHAPTER

PROMULGATED BY THE APWA-AGC
JOINT COOPERATIVE COMMITTEE
1984

CURB AND GUTTER-BARRIER

USE WITH STANDARD SPECIFICATIONS FOR PUBLIC WORKS CONSTRUCTION

STANDARD PLAN

120-0

SHEET 1 OF 1

SEE EMA STANDARD PLAN 120-0-OC FOR CONDITIONS

Th
th
As
ha
Th

AP

12

ORANGE

Adopte

API