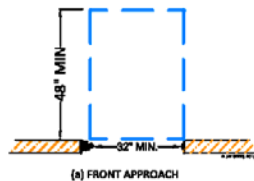


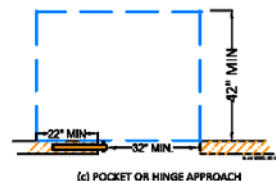
FIGURE 11B-403.5.2(a)

FIGURE 11B-403.5.2(b)

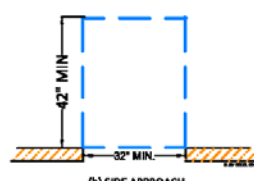




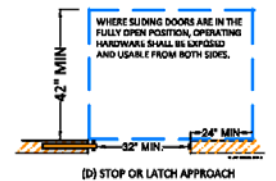
(a) FRONT APPROACH



(c) POCKET OR HINGE APPROACH

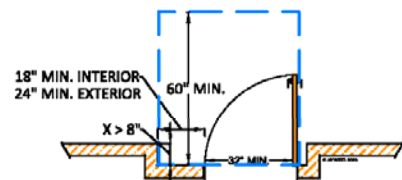


(b) SIDE APPROACH

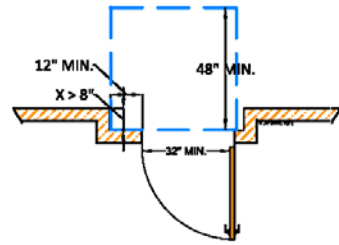


(d) STOP OR LATCH APPROACH

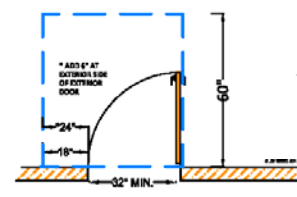
FIGURE 11B-404.2.4.2
MANEUVERING CLEARANCES AT DOORWAYS WITHOUT
DOORS, SLIDING DOORS, GATES, AND FOLDING DOORS



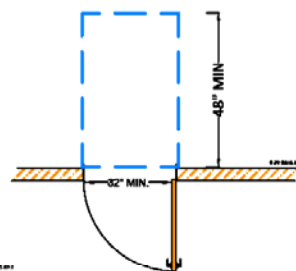
(h) PULL SIDE DOOR (ALCOVE $X > 8'$)
11B-404.2.4.3



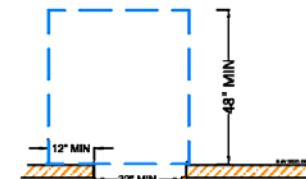
(g) PUSH SIDE DOOR (ALCOVE $X > 8'$)
11B-404.2.4.3



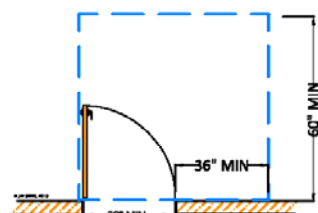
(a) FRONT APPROACH PULL SIDE



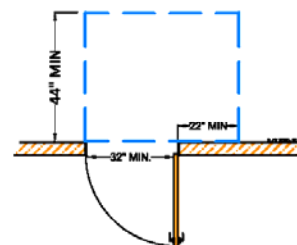
(b) FRONT APPROACH PUSH SIDE



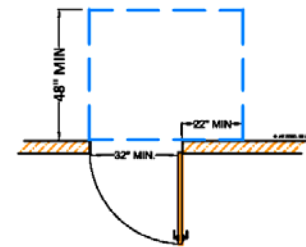
(c) FRONT APPROACH PUSH SIDE
W/ CLOSER & LATCH



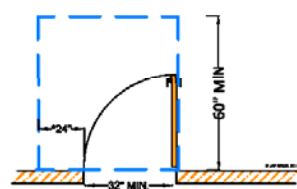
(d) HINGE APPROACH PULL SIDE



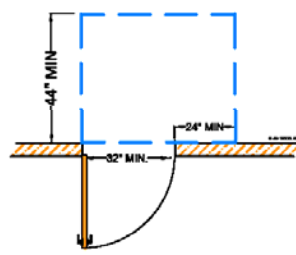
(f) HINGE APPROACH PUSH SIDE



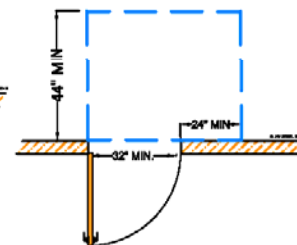
(g) HINGE APPROACH PUSH SIDE
DOOR W/ CLOSER AND LATCH



(h) LATCH APPROACH PULL SIDE

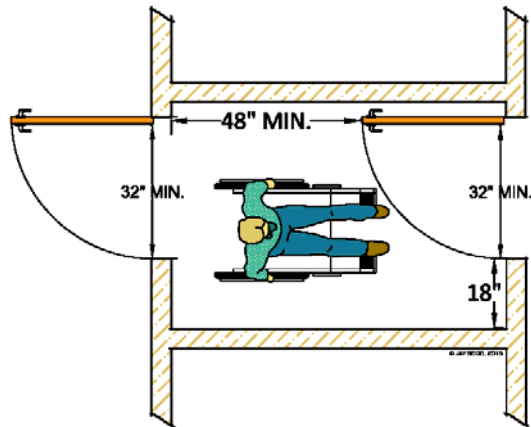


(i) LATCH APPROACH PUSH SIDE

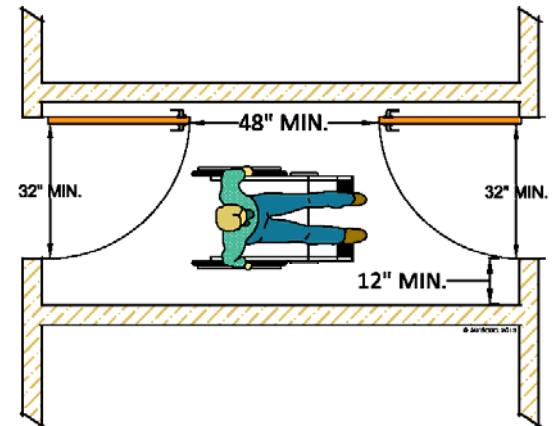


(k) LATCH APPROACH PUSH SIDE
W/ CLOSER & LATCH

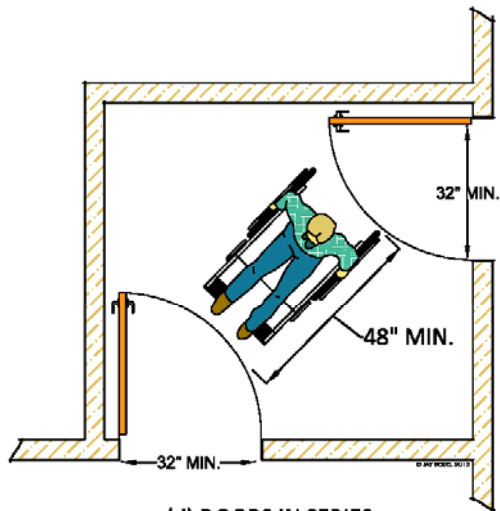




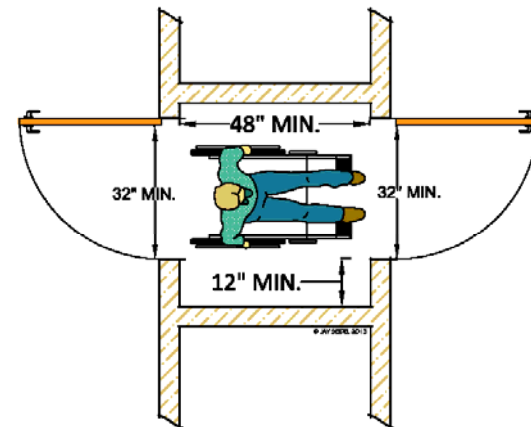
(a) DOORS IN SERIES
11B-404.2.6



(c) DOORS IN SERIES
11B-404.2.6



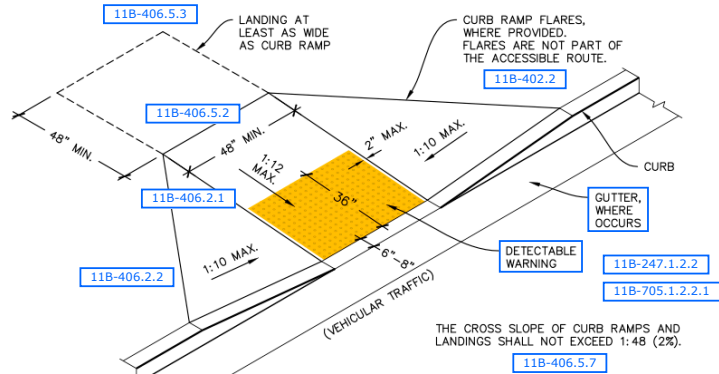
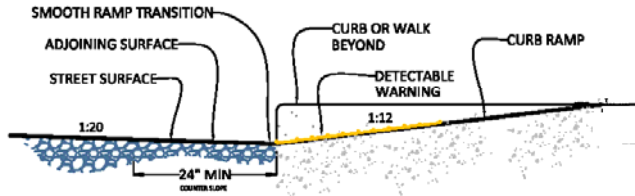
(d) DOORS IN SERIES
11B-404.2.6



(b) DOORS IN SERIES
11B-404.2.6



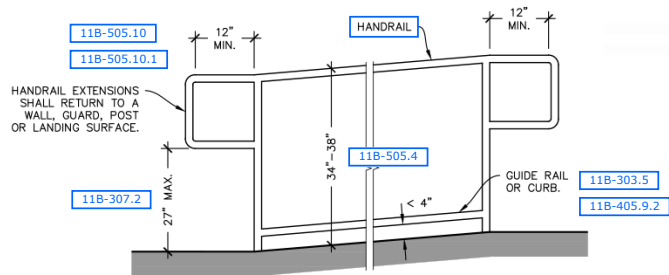
11B-405.5.8 COUNTER SLOPE. COUNTER SLOPES OF ADJOINING GUTTERS AND ROAD SURFACES IMMEDIATELY ADJACENT TO AND WITHIN 24 INCHES OF THE CURB RAMP SHALL NOT BE STEEPER THAN 1:20. THE ADJACENT SURFACES AT TRANSITIONS AT CURB RAMP TO WALKS, GUTTERS, AND STREETS SHALL BE AT THE SAME LEVEL.



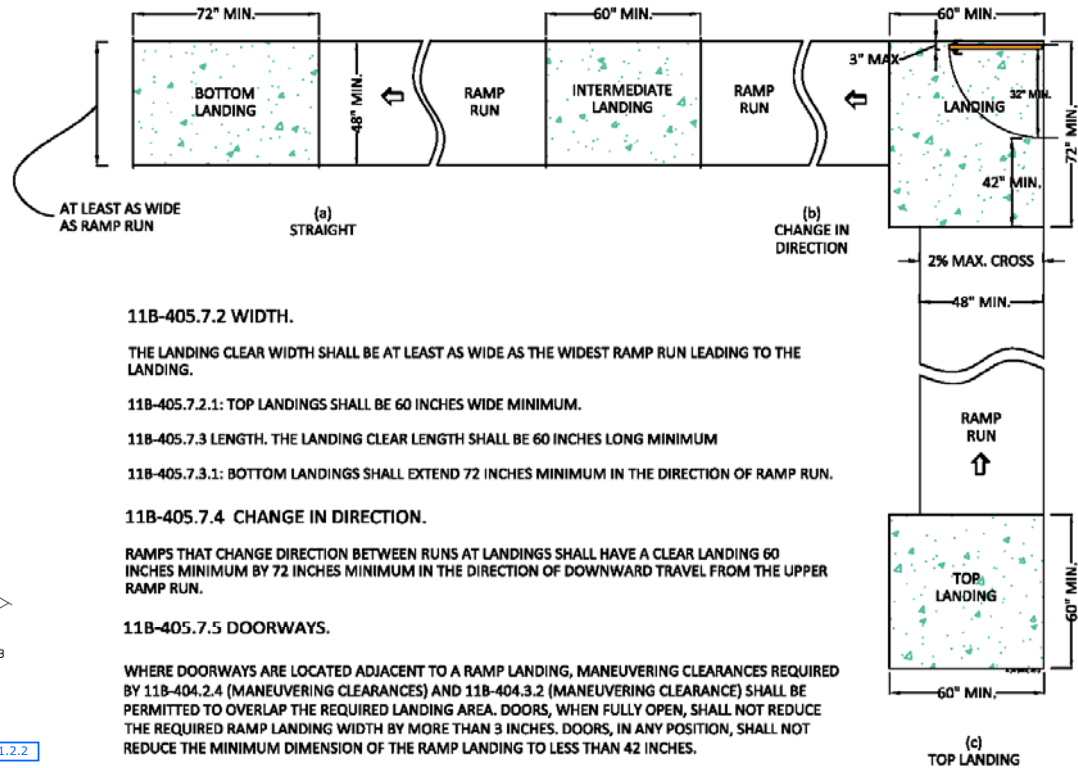
PERPENDICULAR CURB RAMP

(WITH FLARED SIDES)

Ramp Handrails and Edge Protection



HANDRAILS AT RAMPS



11B-405.7.2 WIDTH.

THE LANDING CLEAR WIDTH SHALL BE AT LEAST AS WIDE AS THE WIDEST RAMP RUN LEADING TO THE LANDING.

11B-405.7.2.1: TOP LANDINGS SHALL BE 60 INCHES WIDE MINIMUM.

11B-405.7.3 LENGTH. THE LANDING CLEAR LENGTH SHALL BE 60 INCHES LONG MINIMUM

11B-405.7.3.1: BOTTOM LANDINGS SHALL EXTEND 72 INCHES MINIMUM IN THE DIRECTION OF RAMP RUN.

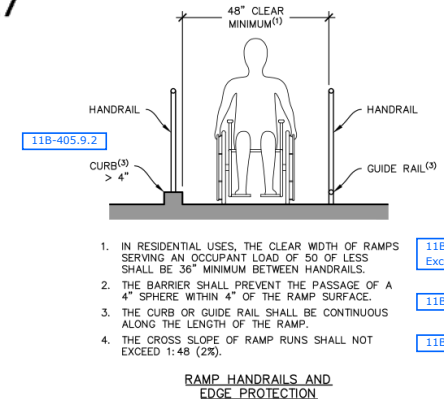
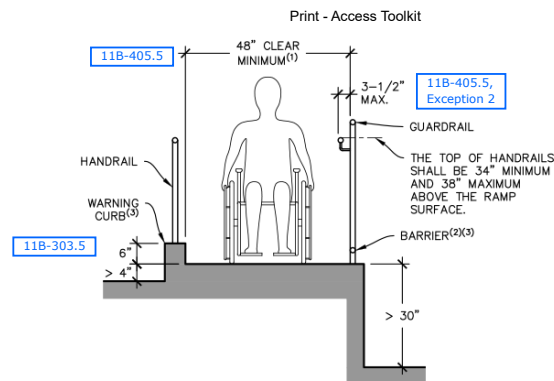
11B-405.7.4 CHANGE IN DIRECTION.

RAMPS THAT CHANGE DIRECTION BETWEEN RUNS AT LANDINGS SHALL HAVE A CLEAR LANDING 60 INCHES MINIMUM BY 72 INCHES MINIMUM IN THE DIRECTION OF DOWNWARD TRAVEL FROM THE UPPER RAMP RUN.

11B-405.7.5 DOORWAYS.

WHERE DOORWAYS ARE LOCATED ADJACENT TO A RAMP LANDING, MANEUVERING CLEARANCES REQUIRED BY 11B-404.2.4 (MANEUVERING CLEARANCES) AND 11B-404.3.2 (MANEUVERING CLEARANCE) SHALL BE PERMITTED TO OVERLAP THE REQUIRED LANDING AREA. DOORS, WHEN FULLY OPEN, SHALL NOT REDUCE THE REQUIRED RAMP LANDING WIDTH BY MORE THAN 3 INCHES. DOORS, IN ANY POSITION, SHALL NOT REDUCE THE MINIMUM DIMENSION OF THE RAMP LANDING TO LESS THAN 42 INCHES.

**FIGURE 11B-405.7
RAMP LANDINGS**



RAMP HANDRAILS AND
EDGE PROTECTION

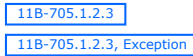
Doors Opening onto Ramp Landings



**CITY OF LAGUNA HILLS
BUILDING DEPARTMENT**

**Accessible Routes
2022 CBC**

DETECTABLE WARNINGS SHALL BE 24" MINIMUM IN DEPTH AT ISLANDS OR CUT-THROUGH MEDIANS THAT ARE LESS THAN 96" IN LENGTH IN THE DIRECTION OF TRAVEL.



11B-406.6

(ISLAND)

48" MIN.

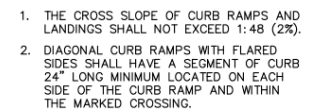
60" MIN.

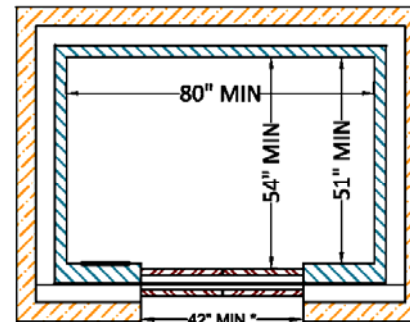
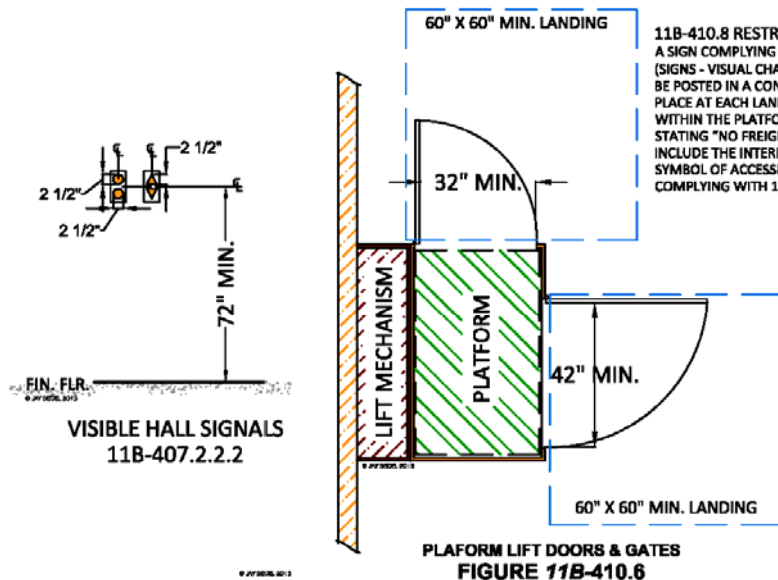
SEE CURB RAMP DETAILS FOR OTHER REQUIREMENTS.

11B-406.6

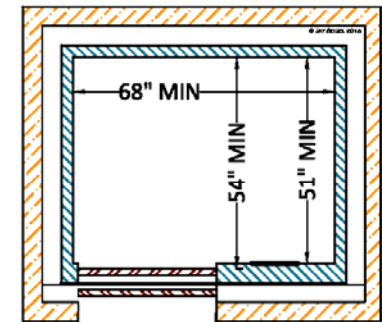


(ONE ENTRANCE/EXIT POINT)

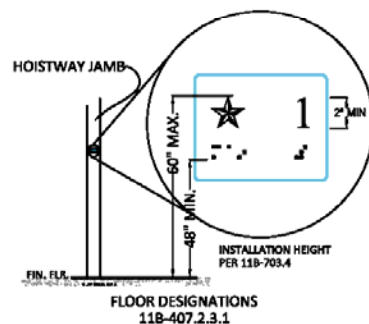




ELEVATOR CAR CENTER DOOR
FIGURE 11B-407.4.1(a)



ELEVATOR CAR SIDE DOOR
FIGURE 11B-407.4.1(b)



11B-407.4.6.1 LOCATION. CONTROLS SHALL BE LOCATED WITHIN ONE OF THE REACH RANGES SPECIFIED IN 11B-308 (REACH RANGES).

11B-407.4.6.2.1 SIZE AND SHAPE. BUTTONS SHALL HAVE SQUARE SHOULDERS, BE 3/4 INCH MINIMUM IN THEIR SMALLEST DIMENSION AND BE RAISED 1/8 INCH PLUS OR MINUS 1/32 INCH ABOVE THE SURROUNDING SURFACE.

11B-407.4.6.2.2 ARRANGEMENT. BUTTONS SHALL BE ARRANGED WITH NUMBERS IN ASCENDING ORDER. WHEN TWO OR MORE COLUMNS OF BUTTONS ARE PROVIDED THEY SHALL READ FROM LEFT TO RIGHT.

11B-407.4.6.2.3 ILLUMINATION. CAR CONTROL BUTTONS SHALL BE ILLUMINATED.

11B-407.4.6.2.4 OPERATION. CAR CONTROL BUTTONS SHALL BE ACTIVATED BY A MECHANICAL MOTION THAT IS DETECTABLE.

11B-407.4.7.1 BUTTONS. CAR CONTROL BUTTONS SHALL COMPLY WITH 11B-407.4.7.1.

11B-407.4.7.1.1 TYPE. CONTROL BUTTONS SHALL BE IDENTIFIED BY RAISED CHARACTERS OR SYMBOLS, WHITE ON A BLACK BACKGROUND, COMPLYING WITH 11B-703.2 (SIGNS - RAISED CHARACTERS), AND BRAILLE COMPLYING WITH 11B-703.3 (BRAILLE).

11B-407.4.7.1.2 LOCATION. RAISED CHARACTERS OR SYMBOLS AND BRAILLE DESIGNATIONS SHALL BE PLACED IMMEDIATELY TO THE LEFT OF THE CONTROL BUTTON TO WHICH THE DESIGNATIONS APPLY.

11B-407.4.7.1.3 SYMBOLS. THE CONTROL BUTTON FOR THE EMERGENCY STOP, ALARM, DOOR OPEN, DOOR CLOSE, MAIN ENTRY FLOOR, AND PHONE, SHALL BE IDENTIFIED WITH RAISED SYMBOLS AND BRAILLE AS SHOWN IN TABLE 11B-407.4.7.1.4

VISIBLE INDICATORS. BUTTONS WITH FLOOR DESIGNATIONS SHALL BE PROVIDED WITH VISIBLE INDICATORS TO SHOW THAT A CALL HAS BEEN REGISTERED. THE VISIBLE INDICATION SHALL EXTINGUISH WHEN THE CAR ARRIVES AT THE DESIGNATED FLOOR.

11B-407.4.7.1.5 BUTTON SPACING. A MINIMUM CLEAR SPACE OF 3/8 INCH OR OTHER SUITABLE MEANS OF SEPARATION SHALL BE PROVIDED BETWEEN ROWS OF CONTROL BUTTONS.

TABLE 11B-407.4.7.1.3		
ELEVATOR CONTROL BUTTON IDENTIFICATION		
CONTROL BUTTON	TACTILE	BRAILLE
EMERGENCY STOP		
ALARM		
DOOR OPEN		
DOOR CLOSE		
MAIN ENTRY FLOOR		
PHONE		

