

Orange County **Older Adults Needs Assessment Report**

Friday, March 14, 2025

Chrislyn Nefas

CEO, Data Analytics, Senior Manager

Claudia Harris

OC Office on Aging, Director



Presentation Logistics & Objectives

Older Adults Needs Assessment Process Overview

Methodology & Demographics

Community Survey Overview

Key Findings

Themes & Trends

Design of the Report

Orange County Master Plan for Aging (OCMPA) Considerations

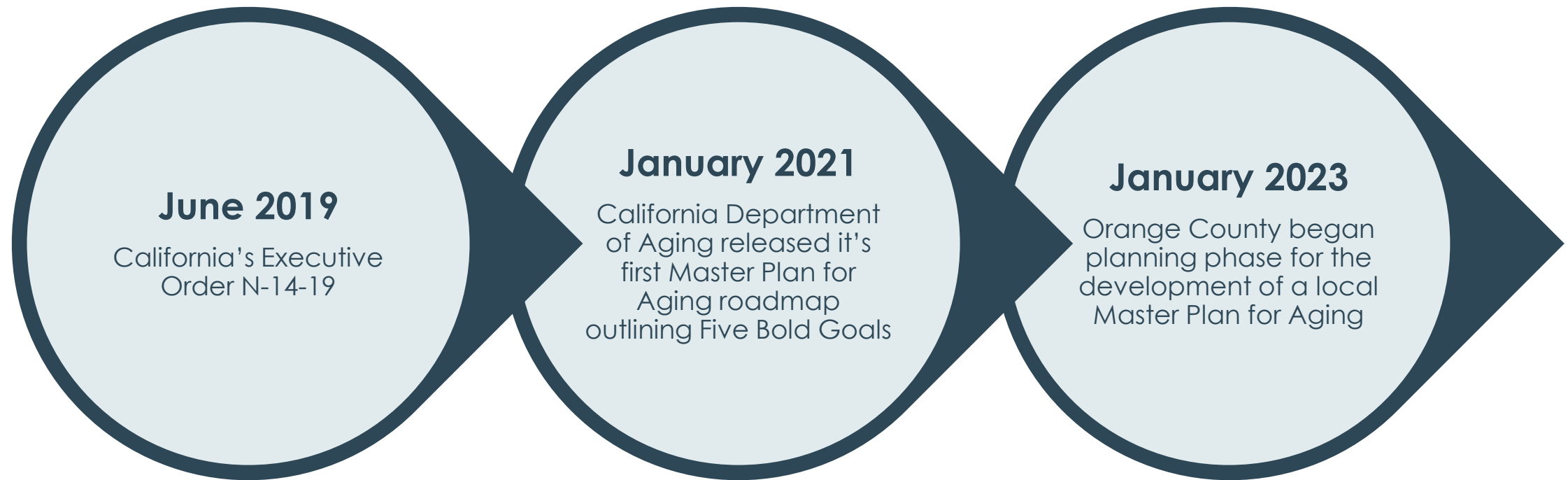
Next Steps

Q&A

Hold questions and comments for Q&A session

Older Adults Needs Assessment Timeline

How did Orange County get here?



Older Adults Needs Assessment Timeline

How did Orange County get here?



Older Adults Needs Assessment **Methodology**

Design of the Needs Assessment based on State's Five Bold Goals

3 surveys - 7,522 valid responses

- Community Survey - 5,657
- Caregiver Survey - 923
- Paid Provider Survey - 942

Convenience targeted sampling method

- Results are specific to those who chose to voluntarily answer

Different number of responses based on each question



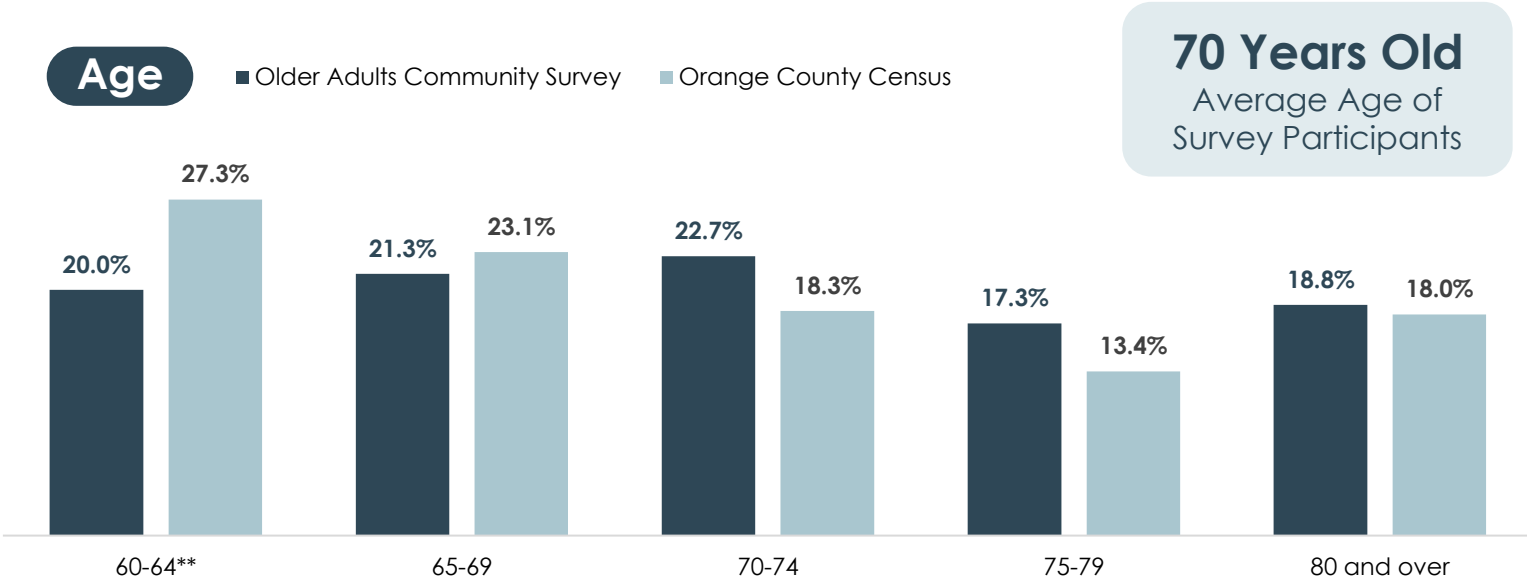
OC Community Survey Demographics

Orange County Census Comparison

5,657*

Orange County
Community Members

*This sample includes hard to reach populations including unhoused and incarcerated individuals.



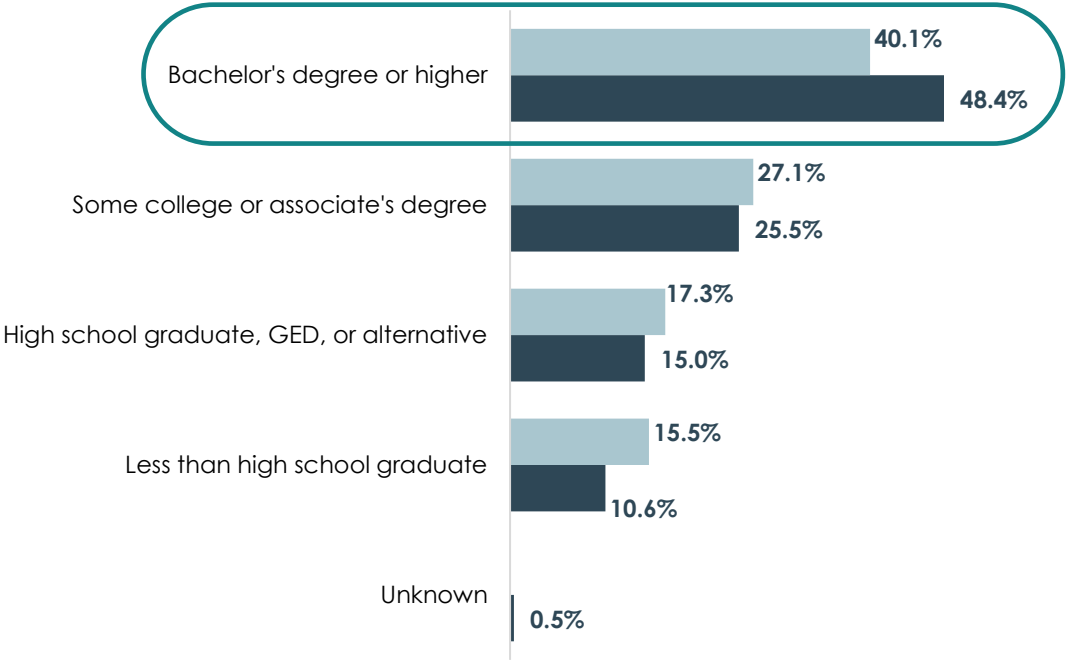
**Although Orange County surveyed people ages 55 years and older, this age range is limited to 60-64 years within this graph to allow for direct comparison to Orange County Census data.

OC Community Survey Demographics

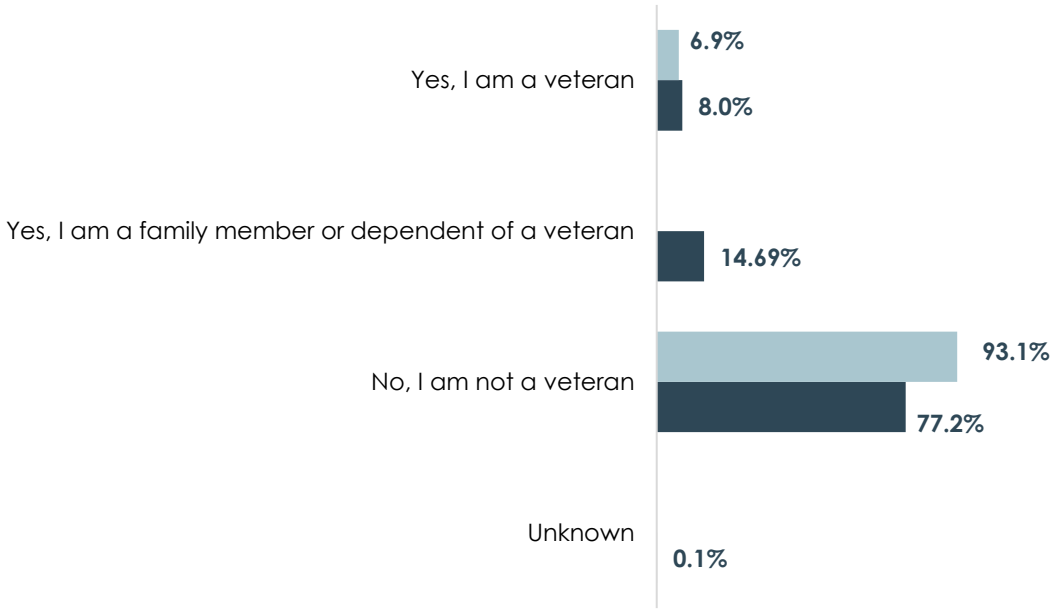
Orange County Census Comparison

Orange County Census
Older Adults Community Survey

Education



Veteran Status

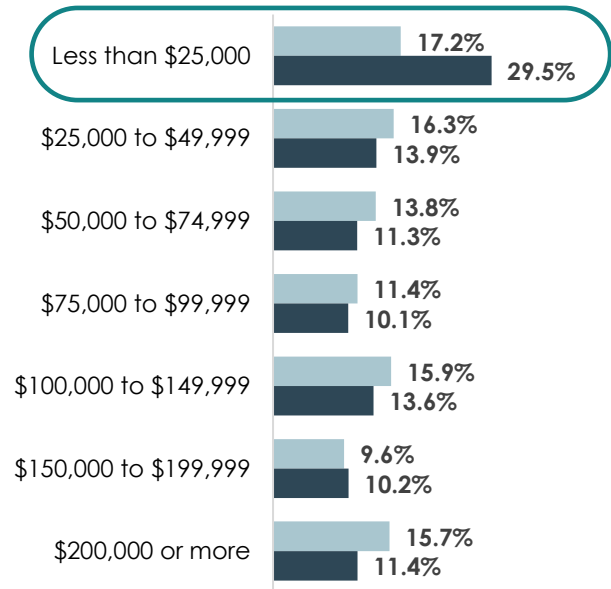


OC Community Survey Demographics

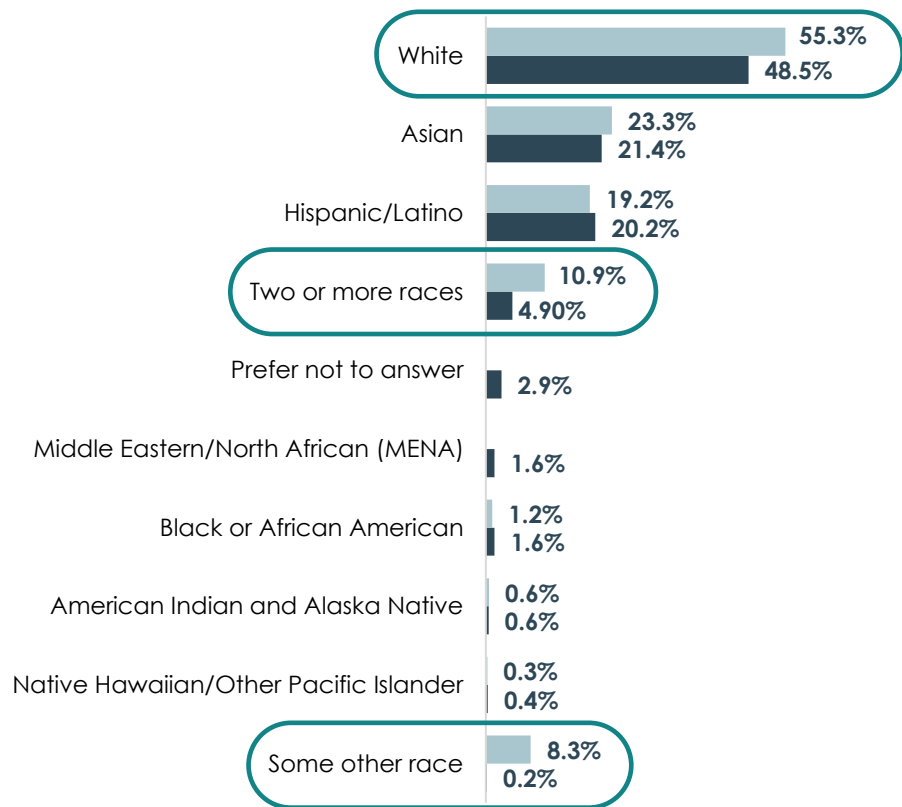
Orange County Census Comparison

Orange County Census
Older Adults Community Survey

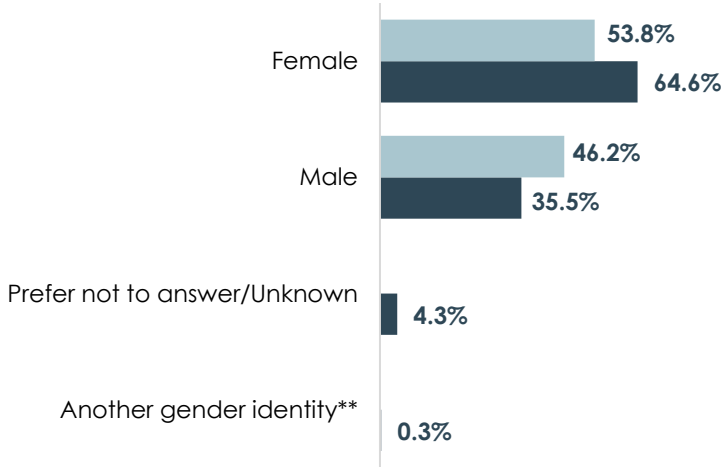
Household Income



Race/Ethnicity*



Gender



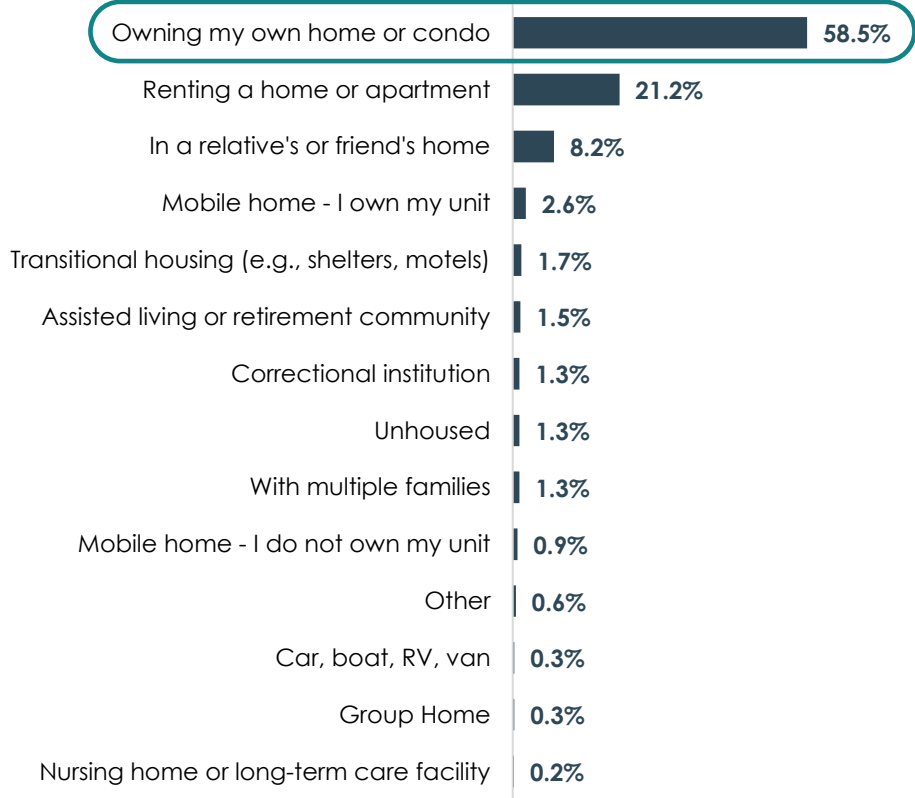
**Another gender identity includes transgender female, Agender/Do Not Identity and Gender Non-Conforming.

*Race/ethnicity was asked within the same question and allowed participants to select more than one response; therefore, percentages will not add up to 100%.

OC Community Survey Demographics

Orange County Census Comparison

Current Living Situation ■ Older Adults Community Survey



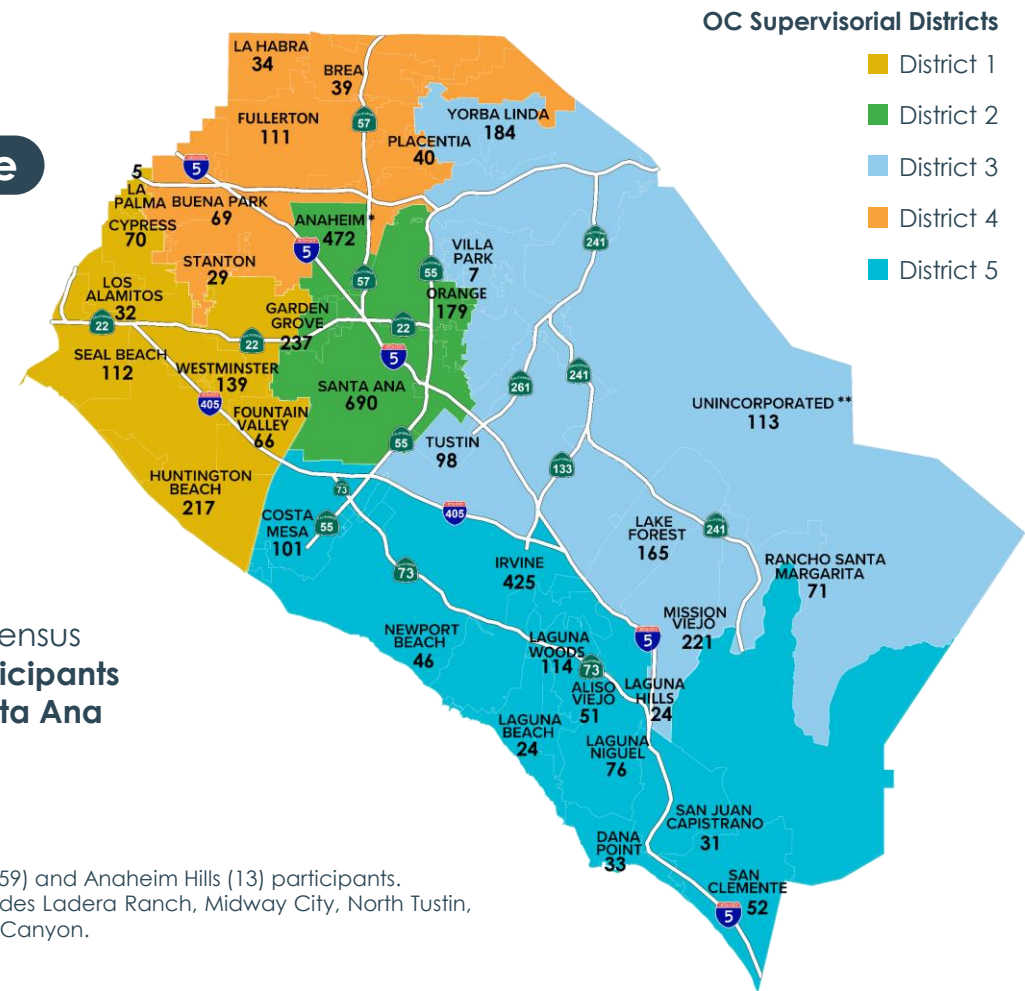
City of Residence

Top Cities of Residence (60+)

Census 2020
Anaheim
Huntington Beach
Santa Ana
Irvine

Consistent with 2020 Census data, **most survey participants lived in Anaheim*, Santa Ana or Irvine**

*This number includes Anaheim (459) and Anaheim Hills (13) participants.
**Unincorporated area total includes Ladera Ranch, Midway City, North Tustin, Rossmoor, Silverado and Trabuco Canyon.

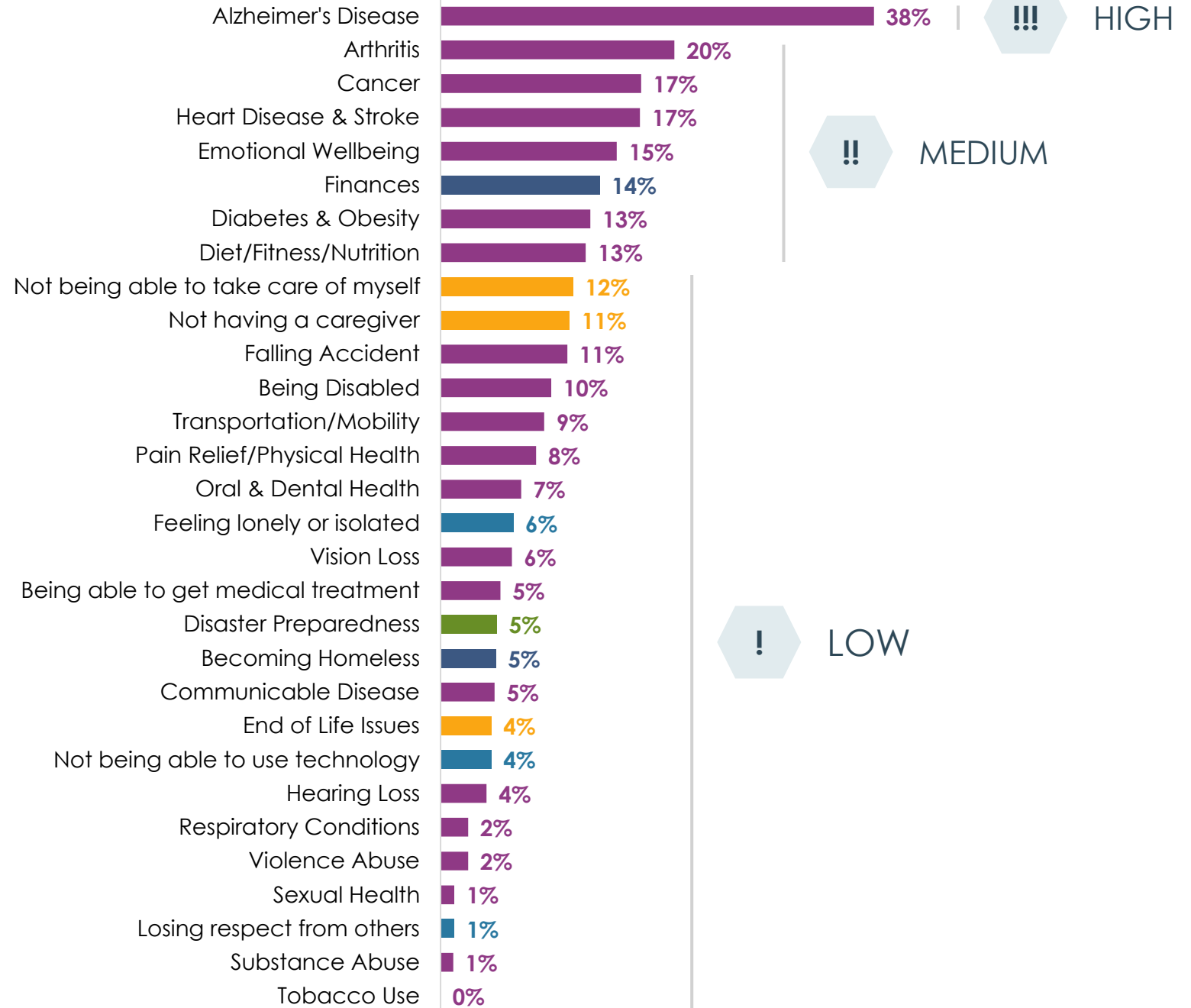


Orange County Community Survey Concerns

Percent of those selecting the item as a top three concern

California Goals

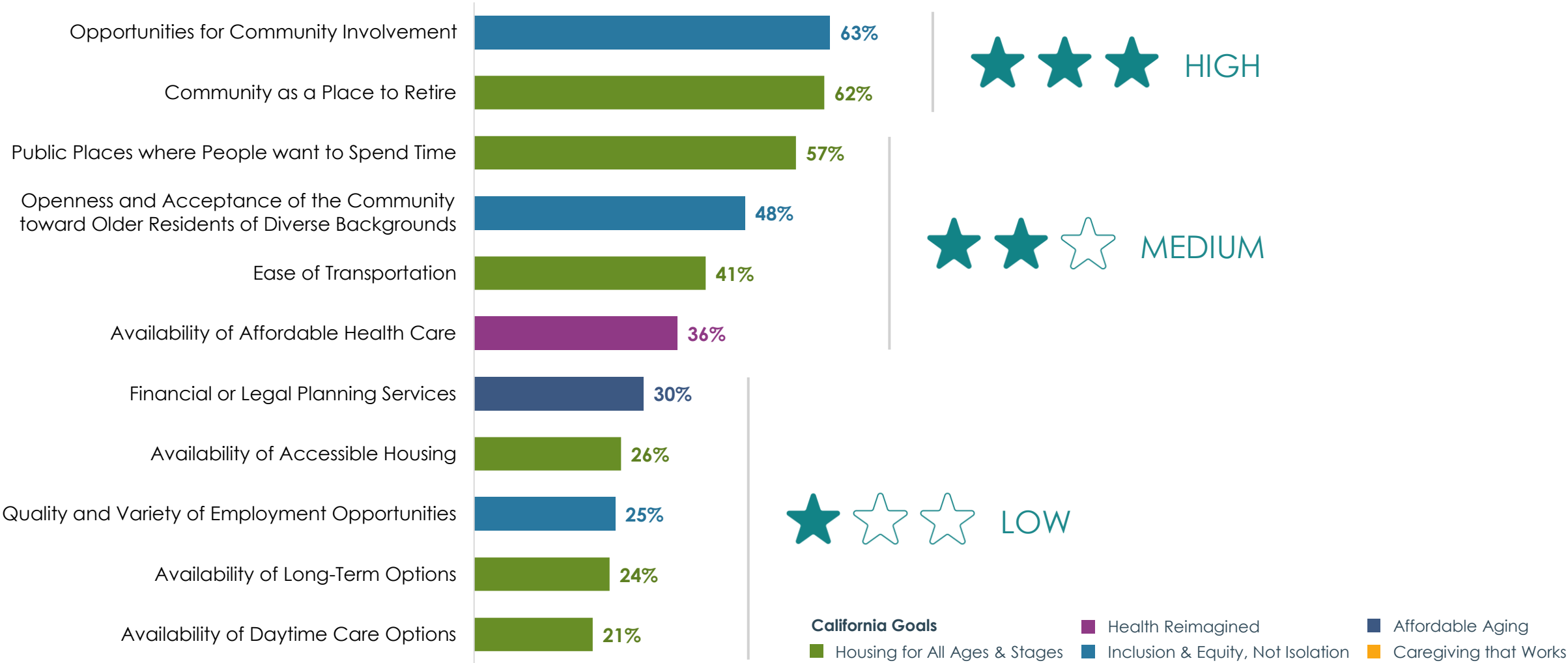
- Housing for All Ages & Stages
- Health Reimagined
- Inclusion & Equity, Not Isolation
- Affordable Aging
- Caregiving that Works



Orange County Community Survey

Community Ratings

Average of participants selecting “Excellent” and “Good”



Community Survey **Key Findings**

Goal 1: Housing for All Ages & Stages

- Community ratings revealed improvement can be made in:
 - Accessible housing
 - Daytime care options
 - Long-term care options



Top 2 most important services for older adults:

- Transportation Services
- In-Home Care

Community Survey Key Findings

Goal 2: Health Reimagined

- Top five aging concerns were health related
- 2.4% of participants reported being uninsured
- Top barriers of accessing health care:
 - Appointments not available at convenient times
 - High cost of copays
 - Don't know where to get help
 - Lack of transportation



Community Survey Key Findings

Goal 3: Inclusion & Equity, Not Isolation

- Community ratings were low for quality and variety of employment
- Isolation and loneliness highly contributed to medical issues
- 1 in 2 experienced age-based discrimination
- 1 in 4 reported politics contributed to their behavioral health issues
- 1 in 4 were not comfortable with technology or using the internet



Community Survey **Key Findings**

Goal 4: Caregiving that Works

- 1 in 3 cared for someone 55 years and older within the past year



Caregiver Survey

Demographics

Goal 4: Caregiving that Works

935 Participants

- 42% 50 – 64 years old
- 78% Female
- 49% White

7 Years

Average time caregivers have provided care

79 Years

Average age of people being cared for



Caregiver Survey

Key Findings

Goal 4: Caregiving that Works

- Emotionally, physically and/or financially challenging
- Negatively impacts social lives
- Often feel isolated and/or depressed

Concerns

- Lack of time for their responsibilities and themselves
- Not knowing about resources

Insights

- Prefer online support
- Feel their work is rewarding



Potential Areas of Improvement:

- Information and resources available to caregivers
- Online support for caregivers

Paid Provider Survey Respondents

Goal 4: Caregiving that Works

935 Participants

- 1 in 2 in-home nursing care or supportive services
- 1 in 4 caregiving resource provider



Paid Provider Survey

Key Findings

Goal 4: Caregiving that Works

Top Concerns

1. Alzheimer disease or dementia
 2. Caregiving
 3. Mental health
 4. Disability
- Although more than 1 in 2 indicated it was "easy to access services", nearly 1 in 5 indicated "not easy at all"
 - Slightly over 1 in 2 felt services are available but insufficient to meet the needs
 - Average rating for ease of keeping up with services was 5.3 out of 10

Potential Areas of Improvement:

- Close service gaps
- Increase capacity with education and promotion of existing resources rather than building new infrastructure of services and supports.



Community Survey Key Findings

Goal 5: Affordable Aging

- 3 in 20 reported cost of living and economic instability contributes to their medical and/or behavioral health issues
- Financial insecurity and becoming homeless
 - Relatively overall low concern for the sample
 - Most concerning with non-homeowners and those 55 – 64 years old



Design of the Report

Executive Summary

Overarching Themes & Trends

Introduction

Methodology & Limitations

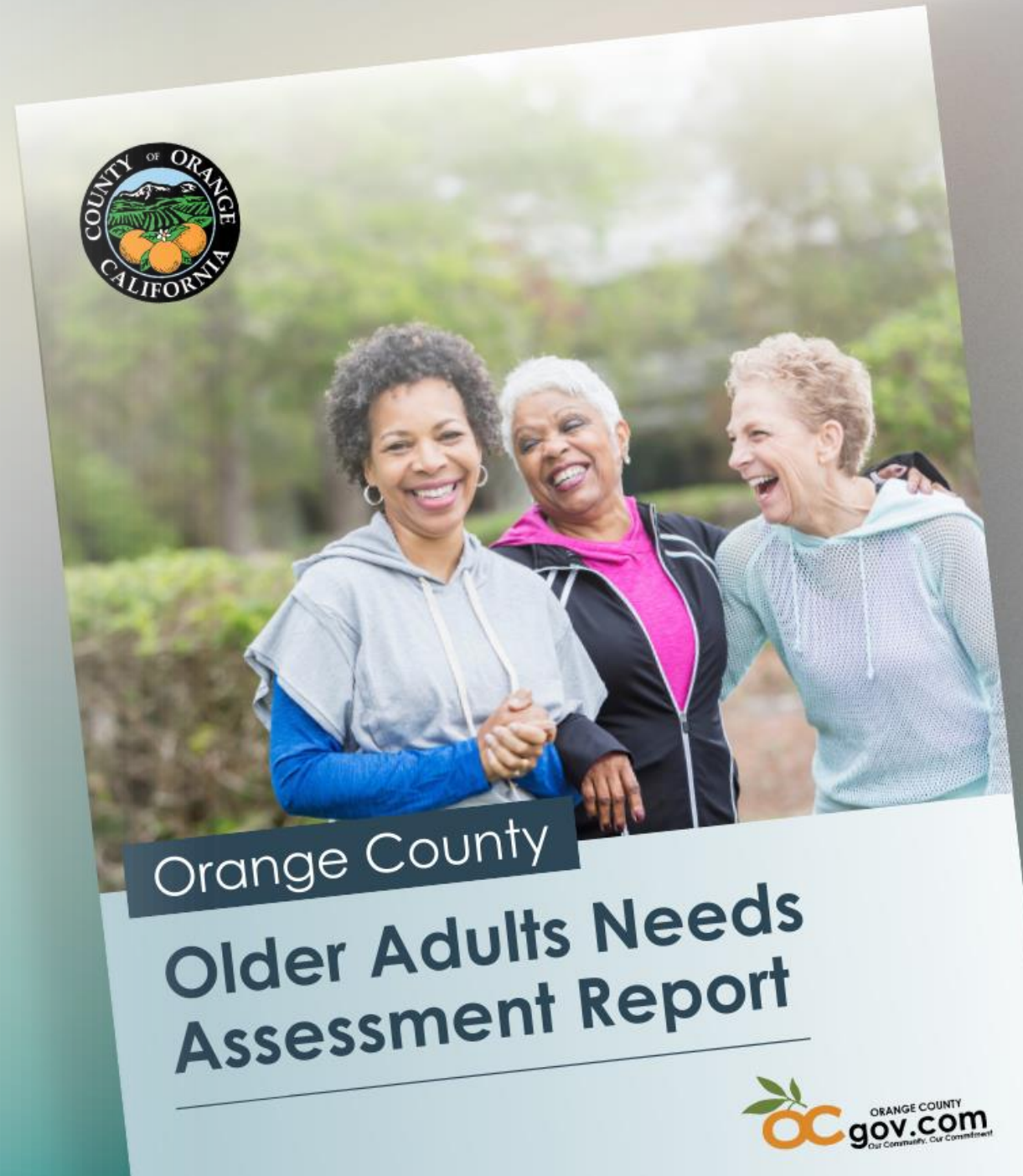
Community Survey Demographics

Concerns & Community Ratings

OC Items Related to CA Strategies

Considerations for OC MPA

Next Steps

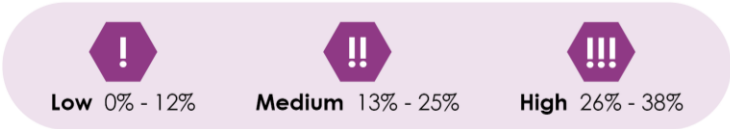


Design of the Report

Concerns & Community Ratings

Scale for Top Concerns

Percentages reflect how often an item was selected as one of a participant's top three concerns from a list of 31 items. A total of 4,503 respondents selected their top three concerns and were included in the ratings. Item selection rates ranged from 0% – 38%.



Memory

!!! 38% “Alzheimer’s Disease & Dementia”

Subgroup rates above 38% for groups with 100 participants or more:

- | | |
|---------------|---------------------------|
| Age | Race/Ethnicity |
| • 40% 60 – 64 | • 43% Asian |
| • 39% 65 – 79 | • 39% Hispanic/Latino |
| Gender | Education |
| • 39% Female | • 41% Bachelor’s Degree |
| | • 39% High School or Less |

- Household Income**
- 47% \$200,000 – \$299,999
 - 41% \$100,000 – \$199,999
 - 40% \$50,000 – \$99,999
 - 40% >\$300,000

Scale for Community Ratings

Ratings of “good” and “excellent” by city of residence were averaged across cities and reported below.



Housing Options

Availability of Accessible Housing

Homes with a no-step entry, single-floor living, wide hallways and doorways



Lowest: Costa Mesa 16%
Highest: Laguna Woods 66%

Availability of Long-Term Options

Range of services and support for people who have a chronic illness or disability and need help with daily activities



Lowest: Costa Mesa 14%
Highest: Mission Viejo 34%

Design of the Report

OC Items Related to CA Strategies

Goal 3: Inclusion & Equity, Not Isolation OC Items Related to CA Strategies

CA Strategy Inclusion & Equity in Aging

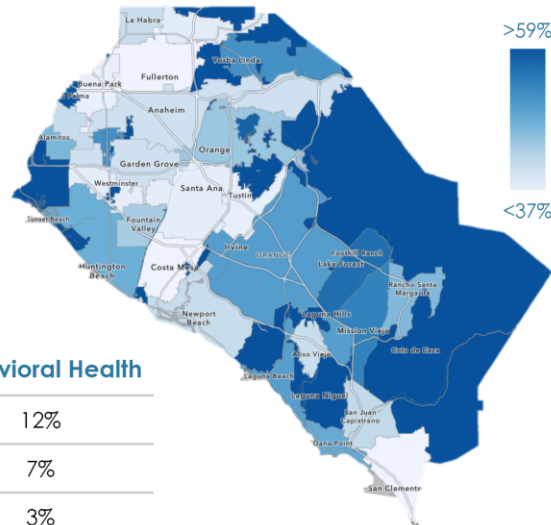
Participants rated their communities on openness and acceptance toward older residents of diverse backgrounds. Ratings of “good” and “excellent” ranged from 31% to 81% depending on city of residence, as shown in the map on the right.

On a separate item, overall concerns related to losing respect from others was rated low at 1.2%.

Participants reported inclusion-related items contributed to their health:

Medical		Behavioral Health
17%	Isolation/Loneliness	12%
7%	Discrimination	7%
-	Immigration-related stressors	3%
-	Politics/Political climate	22%
-	Lack of support for gender, sexual orientation and/or cultural expression	15%

Openness & Acceptance of the Community toward Older Residents of Diverse Backgrounds



Goal 4: Caregiving that Works OC Items Related to CA Strategies

CA Strategy Inclusion & Equity in Aging

The digital divide is an area of potential concern for older adults as virtual care options expand. As reported in [Goal Three](#), 10.5% identified the digital divide (lack or access to or familiarity with technology) as a factor that had prevented them from seeking services. Approximately 10% also said the digital divide contributed to their medical and/or behavioral health issues. As stated in [Bridging the Digital Divide Strategy](#), not all participants were interested in internet or technology devices. This increased by age group, with the highest rate of no interest, 9%, seen among those 80 years old or older. Additional information and trends about those reporting “not being comfortable with using technology and the internet” are reported on the right.

12% Reported not being comfortable using technology and the internet

Subgroup findings for those with 100 participants or more

Age

- 24% > 80 years
- 14% 75 – 79 years
- 12% 70 – 74 years
- 9% 60 – 64 years
- 8% 65 – 69 years
- 6% 55 – 59 years

Language

- 32% Spanish
- 21% Korean
- 16% Vietnamese
- 7% English

Gender

- 13% Female
- 11% Male

Race/Ethnicity

- 25% Hispanic/Latino
- 19% MENA
- 15% Asian
- 13% Multi-racial
- 6% White

CA Strategy Family & Friends Caregiving

Unpaid caregiving is often provided by family, including spouses and friends. Over time, this can potentially lead to burdens such as emotional and physical stress and financial hardship. One-third of participants had cared for someone 55 years or older in the past twelve months and 15% had cared for someone under 55 years old. In addition, 14% reported that caregiving responsibilities contributed to their behavioral health concerns. Findings are shown on the right.

33% Reported caring for someone 55 years or older in the past 12 months

Subgroup findings for those with 100 participants or more

Age

- 44% 55 – 59 years
- 40% 60 – 64 years
- 36% 65 – 69 years
- 32% 70 – 74 years
- 26% 75 – 79 years
- 21% > 80 years

Household Income

- 52% \$300,000+
- 49% \$200,000 – \$299,999
- 48% \$150,000 – 199,999
- 46% \$100,000 – 149,999
- 43% \$75,000 – 99,999
- 38% \$50,000 – 74,999
- 31% \$25,000 – 49,999
- 18% <\$25,000

Race/Ethnicity

- 42% White
- 34% MENA
- 30% Multi-racial
- 23% Asian
- 19% Hispanic/Latino

Gender

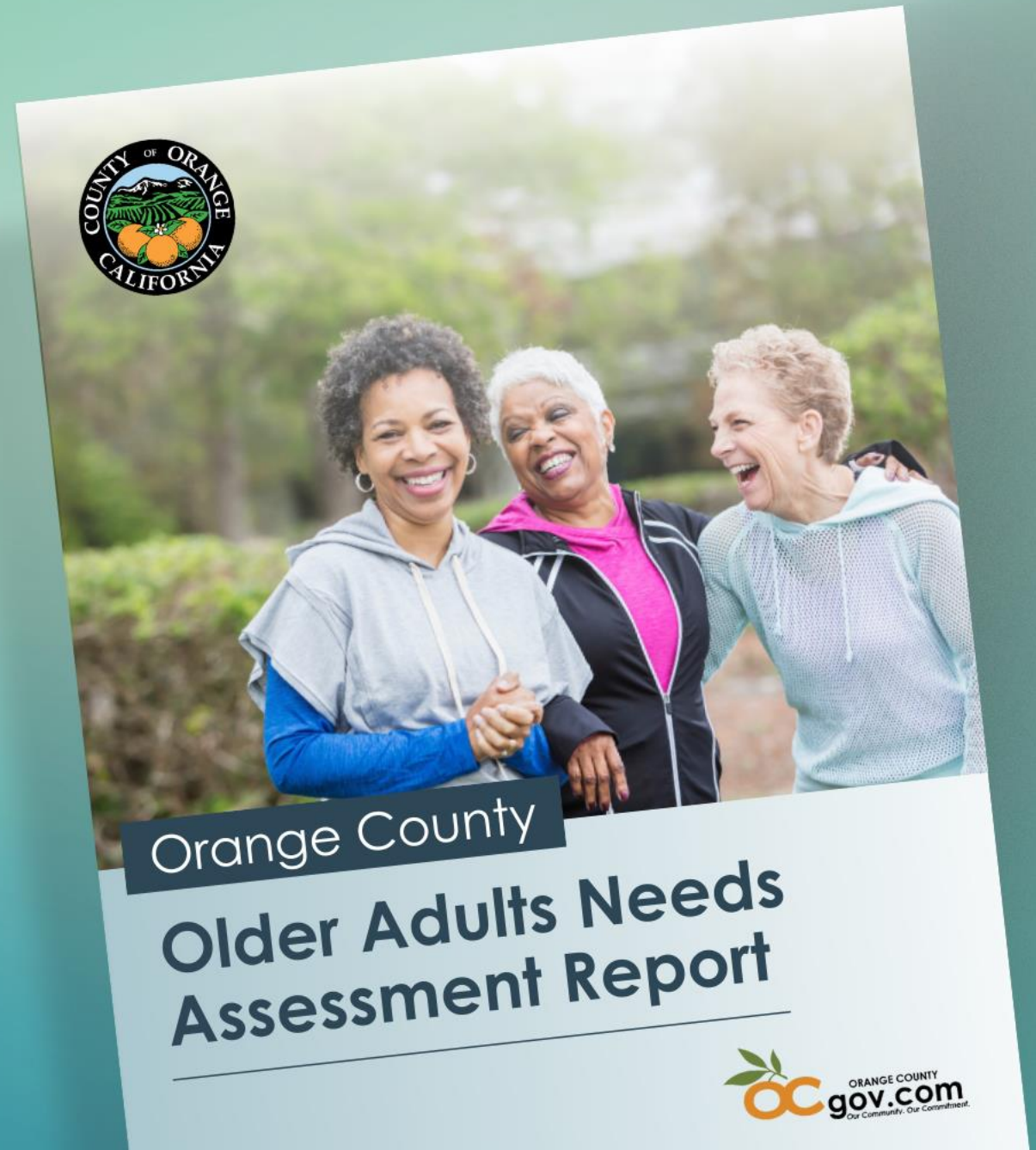
- 36% Female
- 28% Male

Lack of caregiver or childcare relief prevented seeking services:

- 6% Support Services
- 6% Medical Care
- 3% Behavioral Health Care

Orange County Older Adults Needs Assessment Report Now Available

Visit: <https://bit.ly/ocoana>





OCMPA Considerations

Strategy considerations that will help identify areas of need and focus

Goal 1: Housing for All Ages & Stages

- Accessible housing and related services
- Living environments
- Legislative advocacy
- Emergency preparedness and disaster planning



OCMPA Considerations

Strategy considerations that will help identify areas of need and focus

Goal 2: Health Reimagined

- Strengthen partnerships with health plans and systems
- Integration of patient-centered care
- Awareness on disease prevention, chronic disease management, mental health and dementia care
- Comprehensive health care needs
- Awareness and utilization of available services



OCMPA Considerations

Strategy considerations that will help identify areas of need and focus

Goal 3: Inclusion & Equity, Not Isolation

- Opportunities for socialization
- Workplace inclusion of older adults
- Transportation
- Services coordination – culturally inclusive



OCMPA Considerations

Strategy considerations that will help identify areas of need and focus

Goal 4: Caregiving that Works

- In-Home assistance programs
- Culturally inclusive caregiver support
- Support paid and unpaid caregivers
- Partnerships – academic and health institutions
- Enhance assessment tools



OCMPA Considerations

Strategy considerations that will help identify areas of need and focus

Goal 5: Affordable Aging

- Older adult homelessness
- Legislative initiatives – affordable housing and supportive services
- Income security
- Financial safety net programs – linkages to critical resources
- Partnership and collaboration

Orange County Next Steps

1. OCMPA Planning & Development

January – March 2025

- OC older adult assessment considerations
- Current programs serving older adults and caregivers
- County Service Capacity
- Additional data sources
 - Other County of Orange initiatives
 - County's Strategic Financial Plan
 - California's Master Plan for Aging

2. Development of Priorities and Focus Areas

March – April 2025

3. Stakeholder Comment

March – May 2025

4. OCMPA

June 2025



Q&A + Closing Remarks



*We'd love to hear from you!
Scan the QR to leave us a
question or comment.*

*For additional information visit:
<https://bit.ly/ocoana>*

